

NANCY HUDSON ASSOCIATES LIMITED



P O Box 1344 High Wycombe North Bucks HP11 9ER Tel 020 7499 5548
email: agents@nancyhudsonassociates.com website: nancyhudsonassociates.com

NEWSLETTER

April 2009

We are delighted to send you details on two very contrasting theatre productions that our clients CHRISTIAN BRADLEY and PUSHPINDER CHANI are currently working on :-



stovepipe

WUTHERING HEIGHTS

Bronte goes to Bollywood

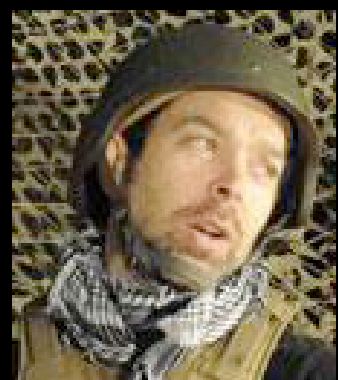
*For every guy tryin to be a pro, there's a psychopath.
And for every psychopath, there's a cowboy.*



When a mercenary goes missing en route to Iraq, his closest surviving friend embarks on a hunt across the post-war Middle East.

STOVEPIPE is an indoor promenade performance at a location in Shepherd's Bush; audiences observe the unravelling of this original drama whilst being guided through five-star hotel bars, seedy brothels, and war-torn desert landscapes.

CHRISTIAN BRADLEY is currently appearing in STOVEPIPE which has received fantastic reviews. Since graduating from RADA Christian has worked on some lovely projects with amazing directors.



Christian's stage work includes OUR FRIENDS IN THE NORTH (Erica Whyman), PARADISE LOST (Rupert Goold), ROMANS IN BRITAIN (Sam West), MACBETH (Ian Brown), 5/11 (Steven Pimlott and THE SEDUCTION OF GOD ALMIGHTY for Howard Barker's Wrestling School.

Closes Sunday 26th April
<http://www.nt-online.org/stovepipe>

bush theatre



The desert of Rajasthan is the setting for this irresistible musical version of Emily Brontë's tale of passion, jealousy and revenge. Shakuntala is the fiery and headstrong daughter of spice merchant Singh. Krishan is the wily street urchin from Bombay that Singh brings home after a trip to market. Thrown together as unlikely siblings, a tumultuous romance soon develops. But can their love withstand Indian society's taboos and hierarchies, not to mention Shakuntala's yearning for the life of luxury that only neighbouring landowner Vijay can provide?

PUSHPINDER CHANI is playing Krishan (the Heathcliff character). On stage Push has worked extensively for Kali and Birmingham Rep, appeared in Tim Supple's production of MIDNIGHT'S CHILDREN at the RSC and worked for Tamasha previously appearing in FOURTEEN SONGS.



On film Push played the lead opposite Sophie Okonedo in CROSS MY HEART, a guest lead in Casualty and 'Raj' in Meera Syal's television drama LIFE ISN'T ALL HA HA HEE HEE.

At the Lyric Hammersmith from
29th April - 23rd May
<http://www.tamasha.org.uk/home>



National
Theatre

If you would be interested in seeing either of these productions or would like more details on CHRISTIAN BRADLEY or PUSHPINDER CHANI please do not hesitate to contact me.